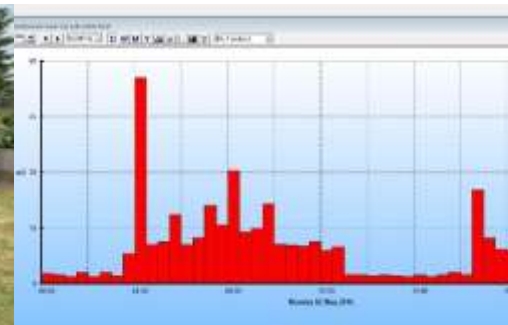


A living lab

Living Lab



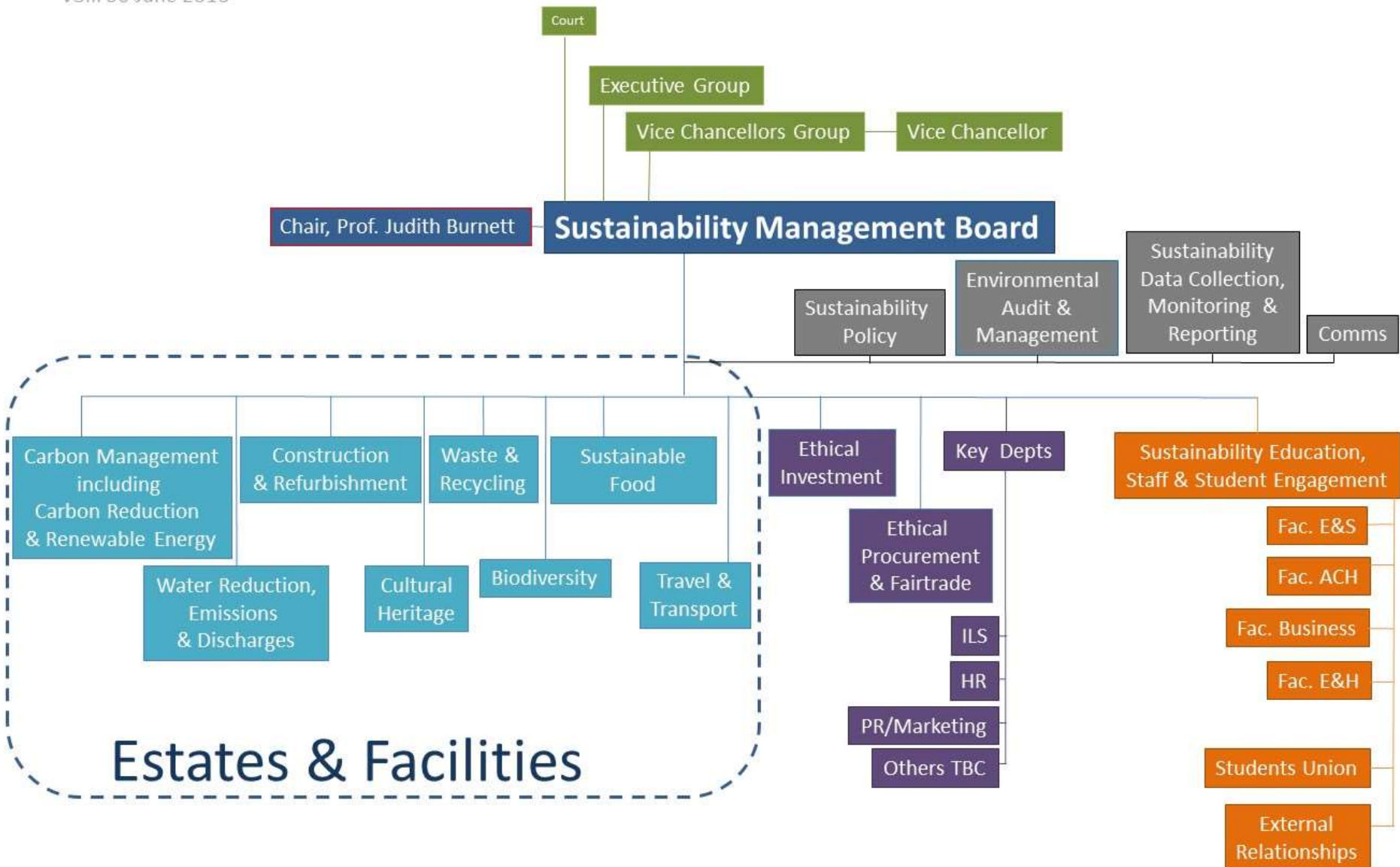
University as a 'Living Lab':

Living Labs are applied research opportunities which can improve the estate and solve practical problems. Research can be applied in other areas of the institution's operations and activities.

Leading Living Lab practitioners include the following universities [MIT](#), [Cambridge](#) and [Manchester](#) .

Organisational and Reporting Structure of the Sustainability Management Board

V3iii 06 June 2016



'Living Lab' Faculty Opportunities

	FACH	FBus.	FES	FEH
Estates:				
Energy & water data	✓✓✓	✓✓	✓✓✓	✓
Energy & water saving ideas	✓✓✓	✓✓	✓✓✓	✓
Renewables	✓✓✓	✓✓	✓✓✓	✓✓
Building design	✓✓✓	✓	✓✓	✓✓
Construction & Refurbishment	✓✓✓	✓✓	✓✓✓	✓
Building use	✓✓✓	✓	✓✓✓	✓✓
Waste & recycling	✓✓	✓✓	✓	✓✓✓
Emissions & Discharges	✓✓	✓	✓✓✓	✓
Transport & Travel	✓	✓✓✓	✓	✓
Behaviour change	✓✓✓	✓✓	✓	✓✓✓
Wellbeing	✓✓✓	✓✓	✓✓✓	✓✓✓

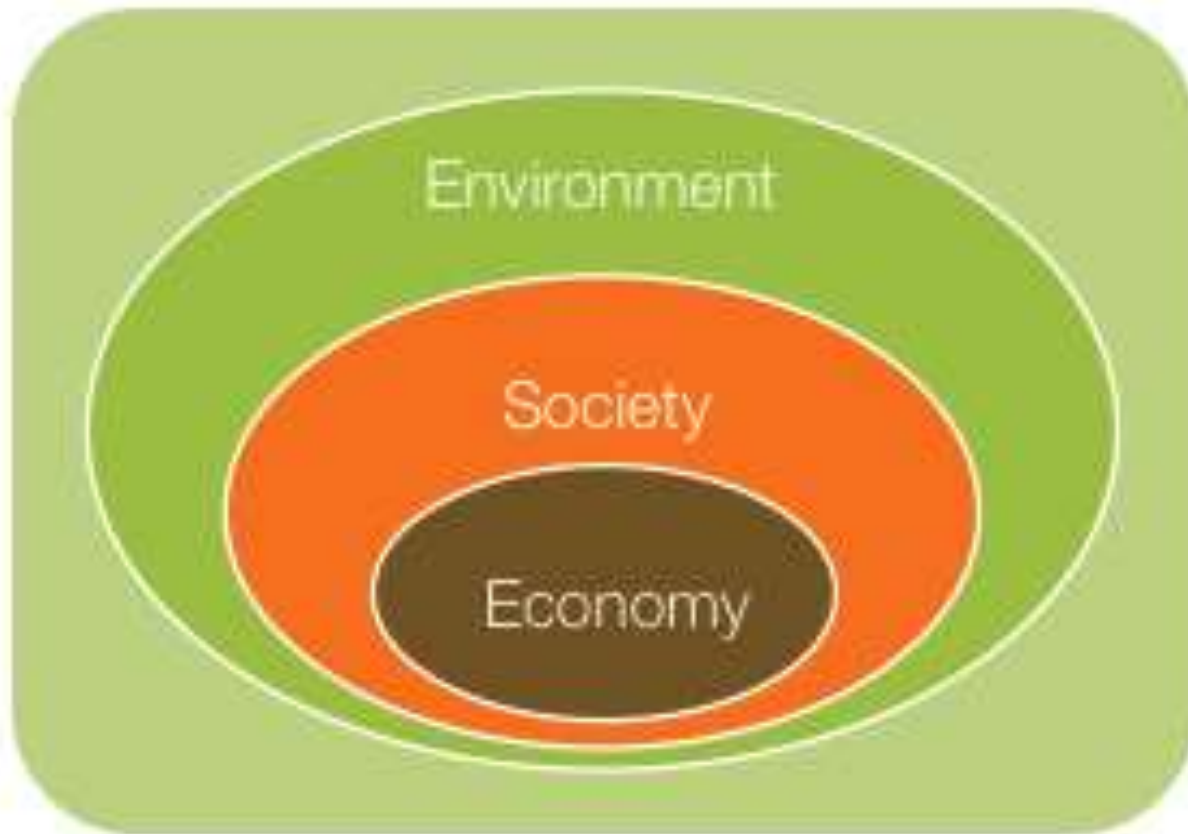
'Living Lab' Faculty Opportunities

	FACH	FBus.	FES	FEH
Estates:				
Landscape	✓✓✓	✓	✓✓✓	✓✓✓
Biodiversity	✓✓✓	✓	✓✓✓	✓✓✓
Food	✓✓✓	✓✓✓	✓✓✓	✓✓
User experiences and needs	✓✓✓	✓✓	✓	✓✓
Environmental Management Systems	✓✓✓	✓✓	✓✓	✓
Faculties				
Education for Sustainable Development	✓✓✓	✓✓✓	✓✓✓	✓✓
Research for Sustainable Development	✓✓✓	✓✓✓	✓✓✓	✓✓
Business case for Sustainable Development	✓✓✓	✓✓✓	✓✓✓	✓✓

'Living Lab' Faculty Opportunities

	FACH	FBus.	FES	FEH
Directorates				
Finance: Ethical Investment		✓✓		
Finance: Sustainable Procurement	✓✓	✓✓✓	✓✓	✓
Other Directorates:				
HR	✓	✓✓✓	✓	✓
ILS	✓✓✓	✓✓✓	✓✓	✓
Marketing & Recruitment	✓✓✓	✓✓✓	✓	✓
Other areas:				
Strategy/Policy	✓✓✓	✓✓✓	✓	
Reporting & Communications	✓✓✓	✓✓✓	✓	✓
Community engagement	✓✓	✓✓	✓✓	✓✓✓
Awards	✓✓✓	✓✓✓	✓✓✓	✓✓✓

Defining Sustainability:



<https://youtu.be/FFCNCQleCuk>

Sustainability 'lens'

- Meeting the goal of a sustainable (restorative) society
- Understanding the consequences (and unintended consequences) or work (sustainability and systems thinking)
- Emergent & new ways of thinking (constraint's, backcasting from success)
- Having clear principles to help guide thinking, decisions & actions
- Having a common language for success

Sustainability helps

- Overcome different understandings
- Can turn complexity to simplicity
- Defined and applicable
- A shared language
- A connector
- A lens to understand the world & create solutions
- The concept that helps enable a successful future society
- Meet key organisational drivers

Consider applying the



**SUSTAINABLE
DEVELOPMENT** GOALS



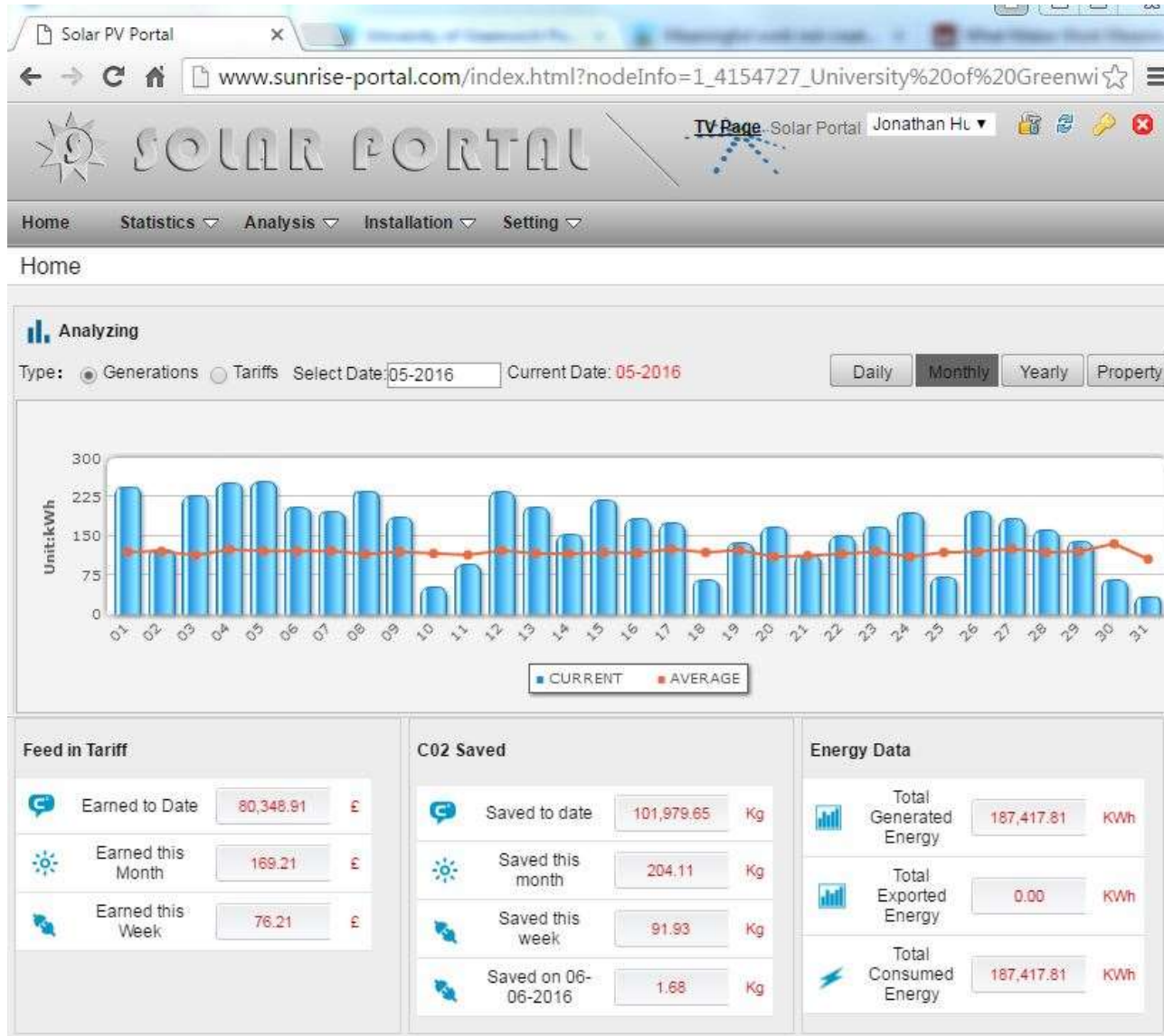
Matching Challenges **with** **Opportunities**

- Performance gaps of new buildings
- Energy & water waste
- Improvements to recycling rates
- Sustainability engagement, action, behaviours
- Design, build and use of sustainable buildings

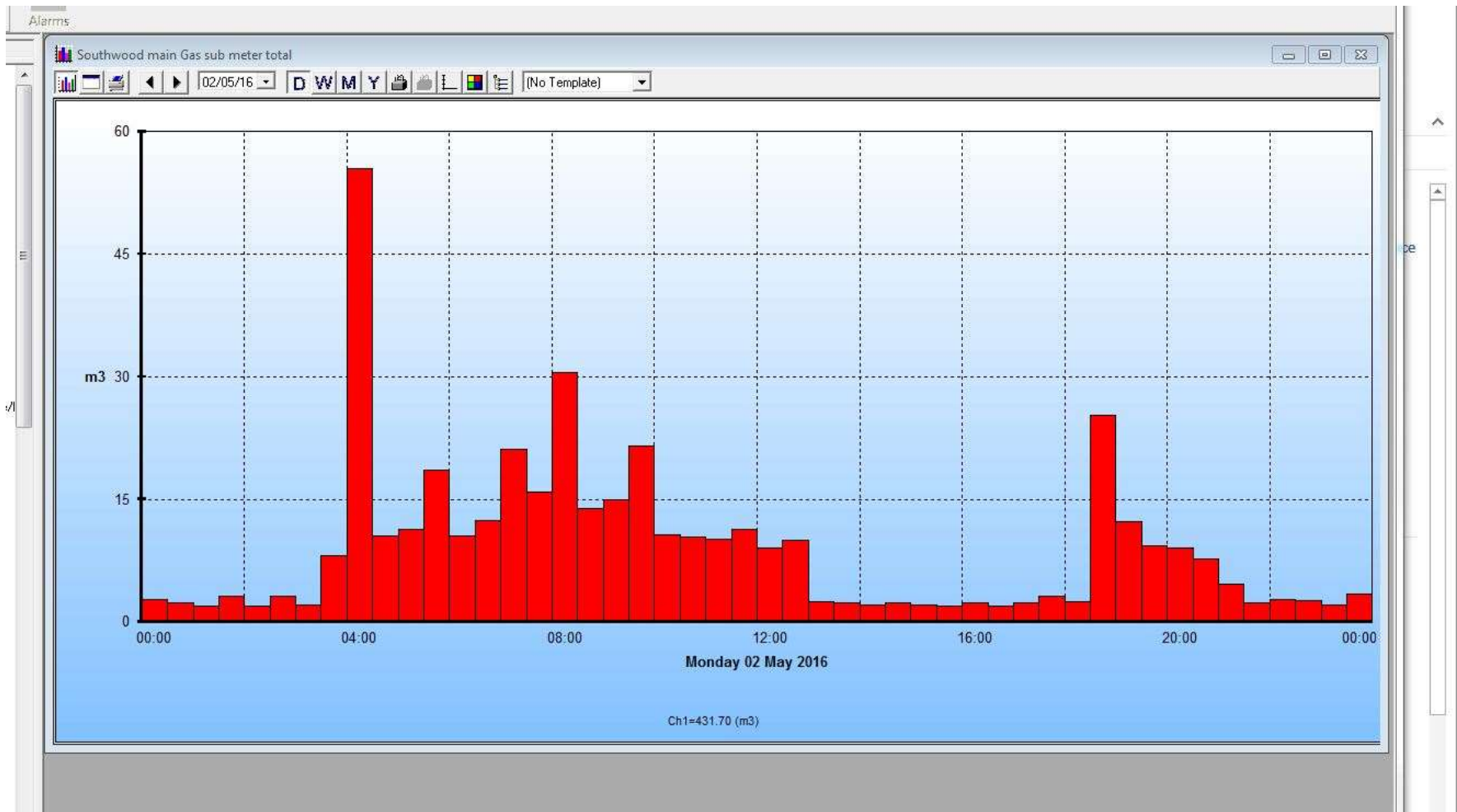
Examples to Apply **Now**

- Half hourly meter data electricity, gas & water,
- Waste & recycling PV generation & travel data sets
- Behaviour change/psychology waste, recycling, litter, travel, energy use, relationships, etc. etc.

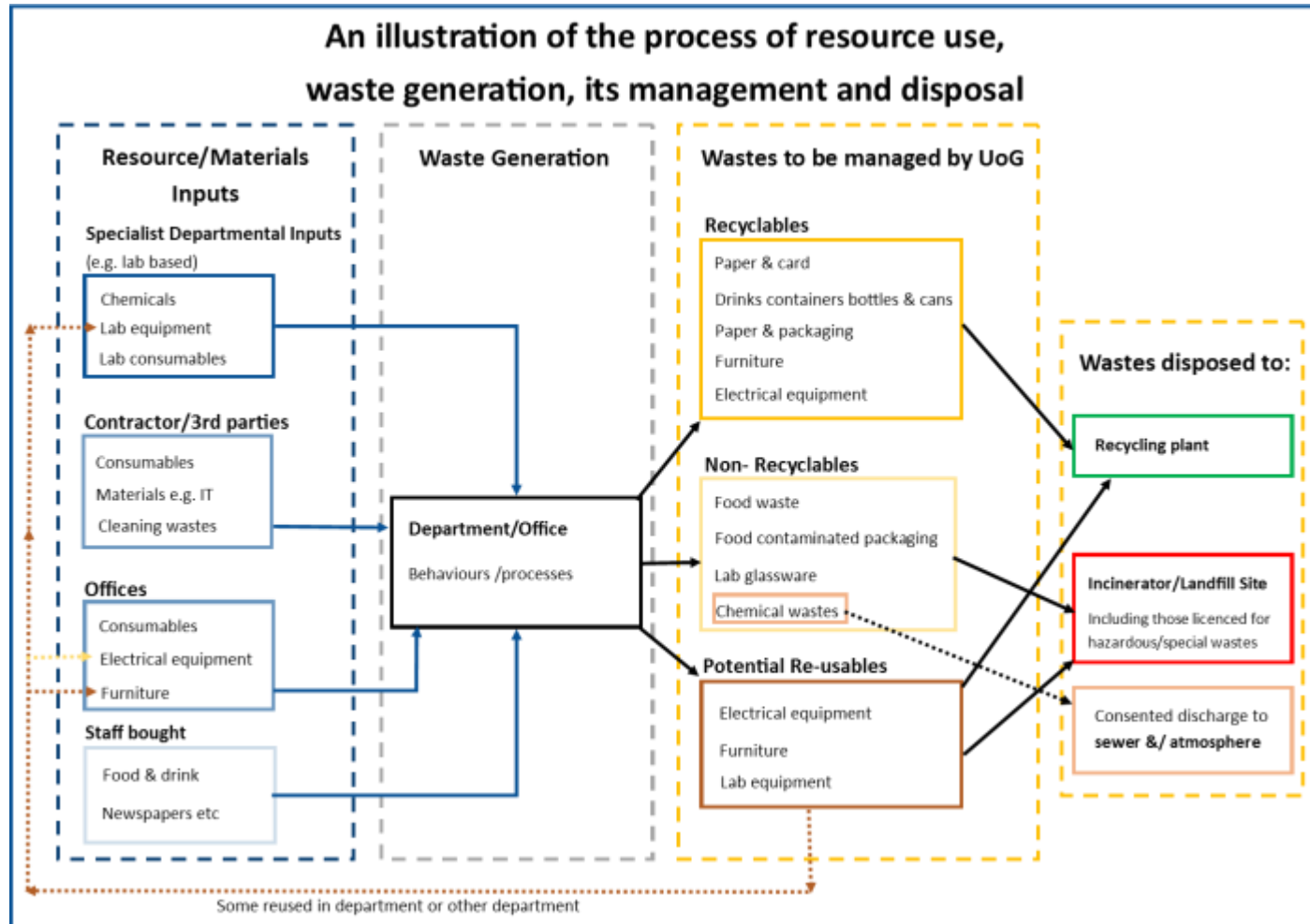
Solar PV Generation



Gas/electricity/water use



Waste & Recycling



Behaviour **change**

ONE DOES NOT SIMPLY



THROW RUBBISH INTO ANY BIN

Recycling is easy.
Join Boromir and the rest of us and recycle here.

Recycle :-)



Non-recyclable




Bright out?
Then lights
out. Thanks.



For more sustainable ideas & actions visit:
<http://blogs.gre.ac.uk/greengreenwich/>



Look after
your health.
Take the stairs.

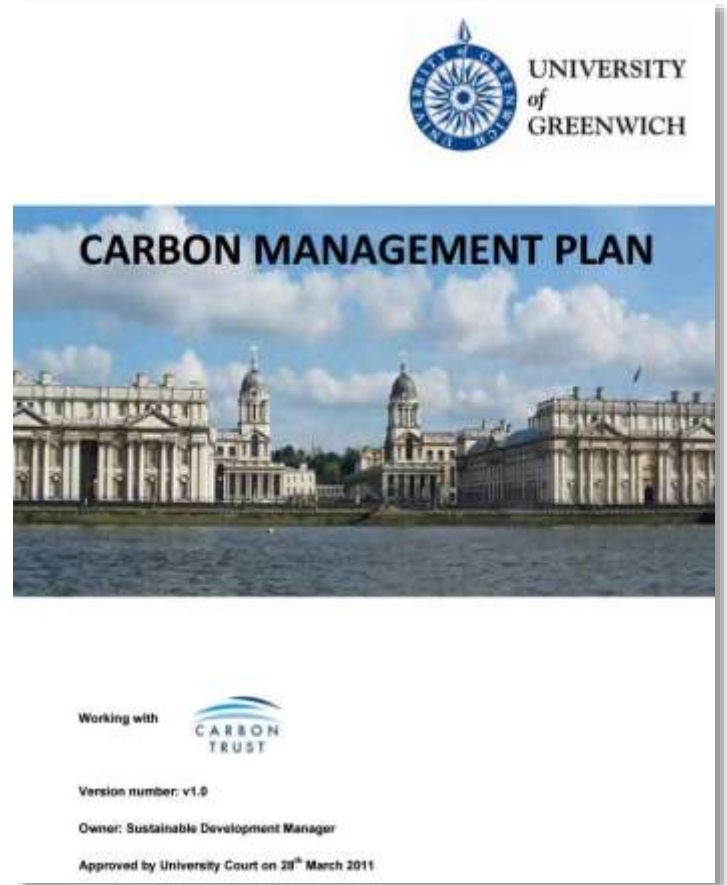
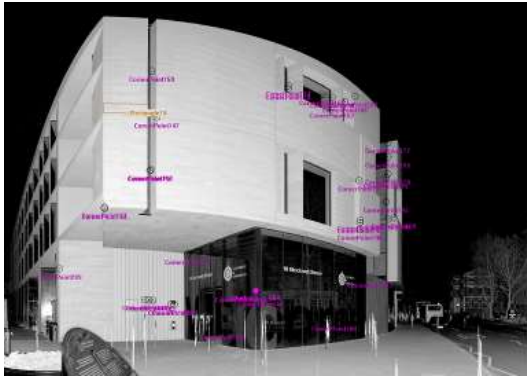


Last to leave?
Please switch us
off



Thank you for taking care.
Your action has helped the university save energy, carbon & costs and helps make the world a better place for all.

Actions & Opportunities



Funding

- Potential to bid into Carbon Management Plan for projects that save carbon with good payback period
- Proposals to Biodiversity Steering Group for landscape & biodiversity related projects
- Proposals for research on waste & recycling projects
- Research pots from faculties
- Funding bodies
- Commercial organisations

What next?

- Contact the Sustainable Development Unit
- Suggest interest/support to DVC Research for SD as a priority area
- Support concept of Living Lab at Greenwich
- Engage your academics & students
- Capture benefits
- Showcase outcomes

The

Sustainable Development Unit

- Strategy & Policy
- Teaching & Education for Sustainable Development
- **Research**
- **Sustainability Communications & Reporting**
- **Living Lab**
- Staff engagement & behaviour change
- ISO 14001 (Environmental Management)
- **Projects, Collaborations & Connections (Internal & External)**
- Contact Simon Goldsmith, gs15@gre.ac.uk, [Website Link](#), Twitter: @sust_Greenwich

