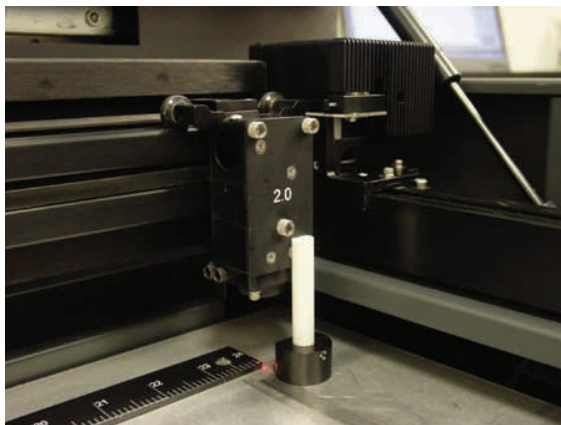


AO20 - CPU Initialization /Auto-Z Calibration

NOTE: This procedure must be performed with the solid aluminum Engraving Table installed. Do not use the honeycomb Cutting Table for this procedure.

Table of Contents

1. Power up your computer and the PLS. Home the Z-axis by clicking the HOME Z button in the VIEWER tab of the VCP.



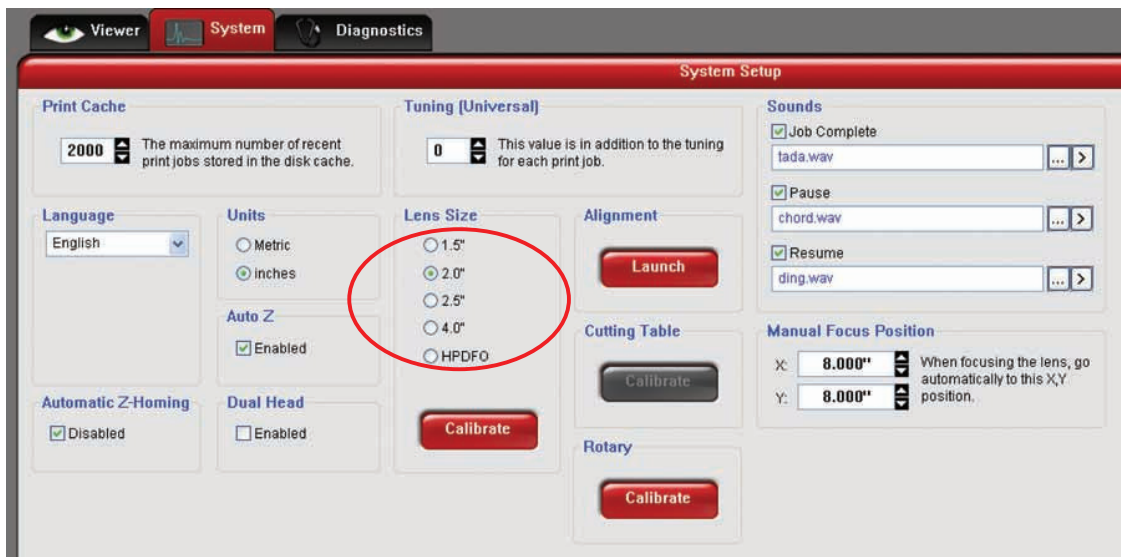
- 2 Using the UP and DOWN arrow buttons, either on the machine (enter the Z Menu) or in the UCP, bring the Z-axis table up. Using the appropriate Focus Tool for the lens installed (the standard is 2Q other Focus Lens Kits are optional), focus directly on the surface of the table.



- 3 In the UCP, click the SYSTEMtab and choose 2.0 from the Lens Size list



- 4 Click on the Calibrate button within the Lens Size box of the System Tab. The following window appears. Click on Save to accept the new Z Position. Your 2.0 Lens has now been calibrated.



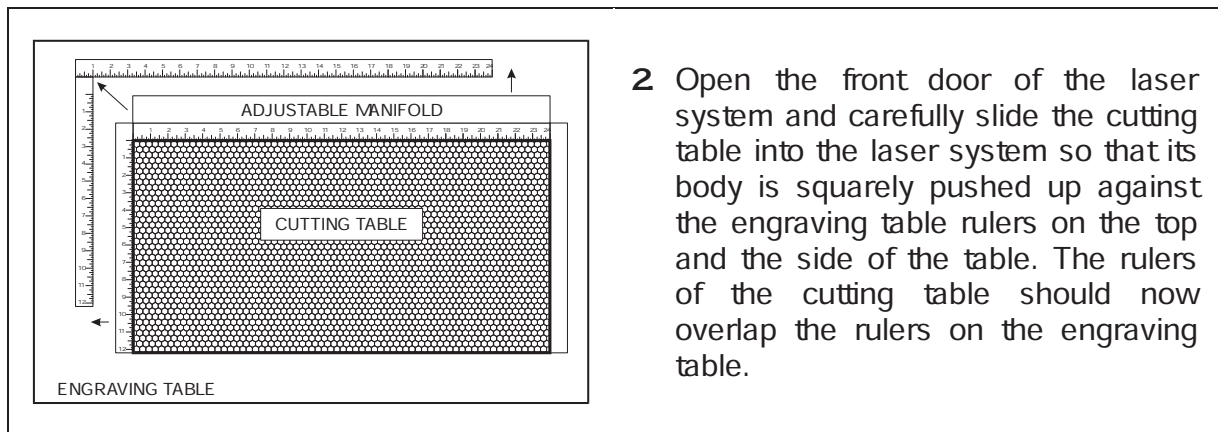
- 5 If you have purchased any other optional lens kits, calibrate the lens kit according to steps 1 through 4. Be sure you select the proper lens size from the list before calibrating.
- 6 You are now done calibrating your Lens Sizes and the Auto Z feature with the standard engraving table.

A030 - Cutting Table Calibration

Table of Contents

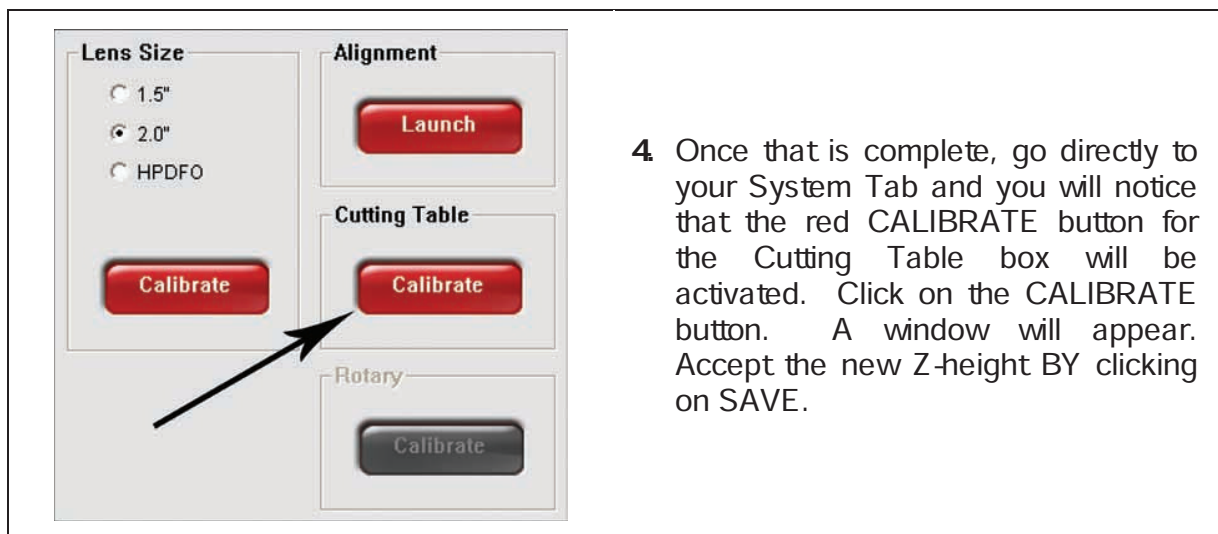
Installation

1. Turn the PLS on and lower the table all the way down to the bottom of its travel by using the keypad or UCP.



2. Open the front door of the laser system and carefully slide the cutting table into the laser system so that its body is squarely pushed up against the engraving table rulers on the top and the side of the table. The rulers of the cutting table should now overlap the rulers on the engraving table.

3. After you have installed the Cutting Table into your PLS, manually focus to the Cutting Table surface by using the appropriate focus tool.



4. Once that is complete, go directly to your System Tab and you will notice that the red CALIBRATE button for the Cutting Table box will be activated. Click on the CALIBRATE button. A window will appear. Accept the new Z-height BY clicking on SAVE.

5. You are now done calibrating the new Z-height for engraving or cutting on the Cutting Table.